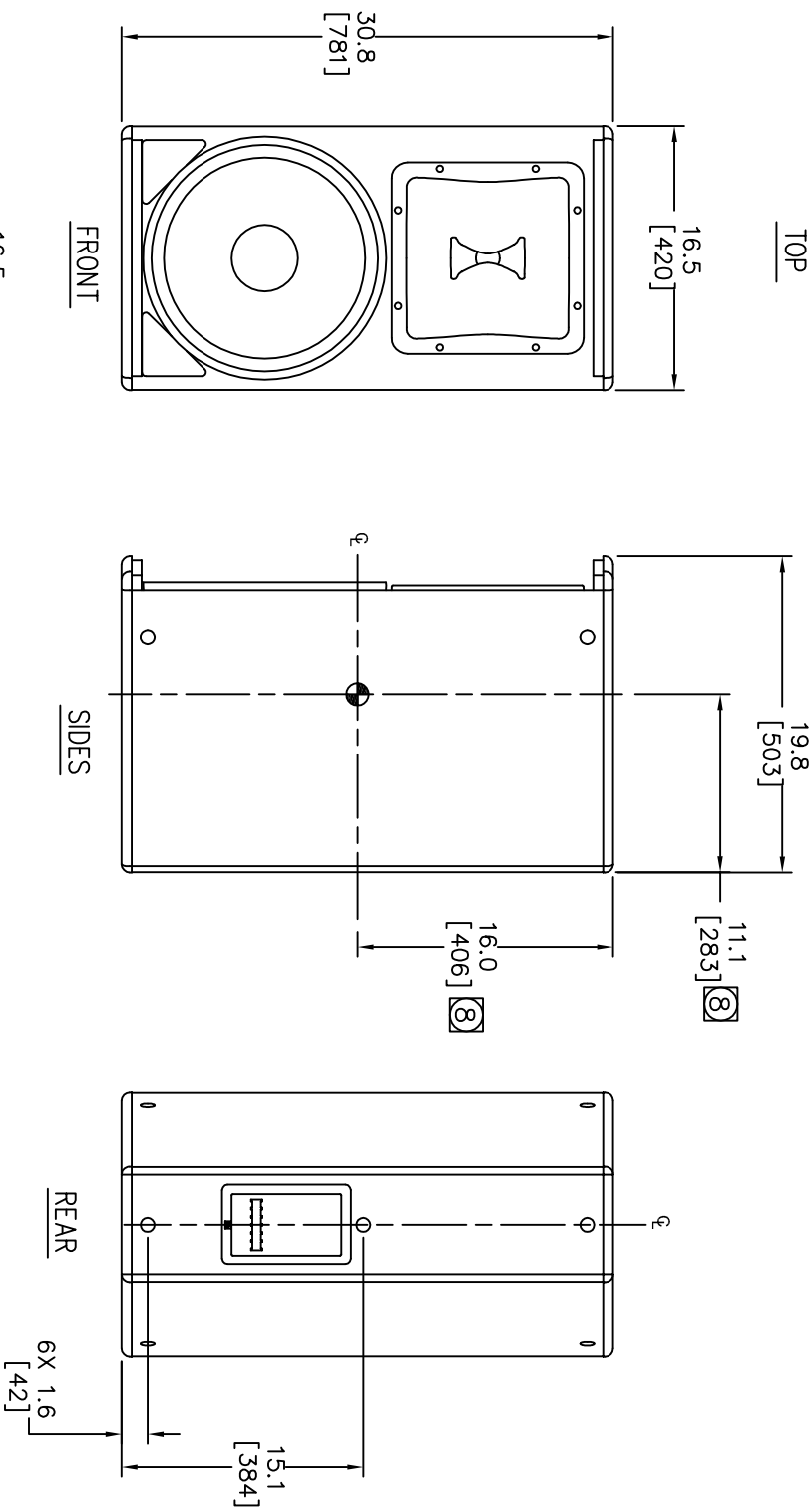
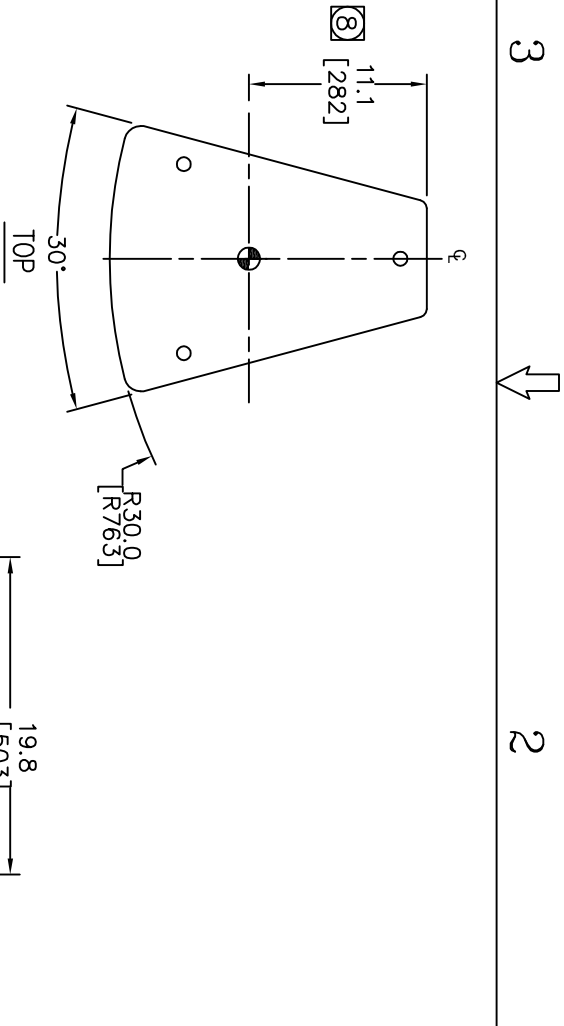


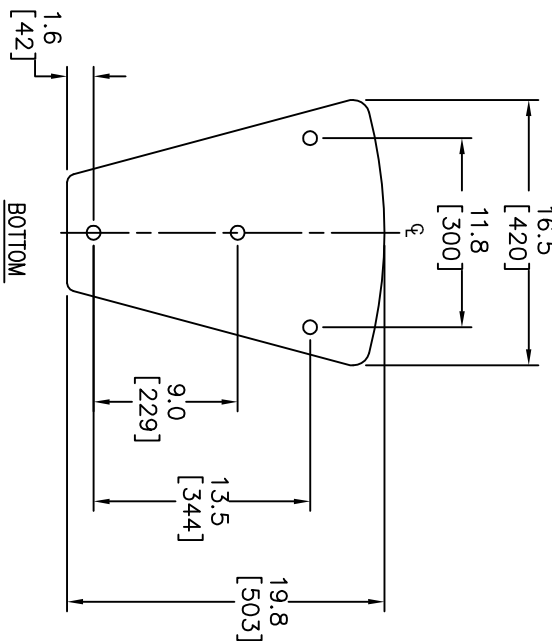
THESE DRAWINGS AND SPECIFICATIONS ARE THE PROPERTY OF JBL INCORPORATED. THEY ARE ISSUED IN STRICT CONFIDENCE AND SHALL NOT BE REPRODUCED OR USED AS THE BASIS FOR MANUFACTURE OR APPARATUS WITHOUT WRITTEN PERMISSION.

ALL MATERIAL SPECIFIED ON THIS DRAWING SHALL COMPLY WITH EUROPEAN DIRECTIVE 2002/95/EC. **[8]**

REVISIONS					
CHG	LTFR	DESCRIPTION	DEPT	D.C	DATE
39049	A	RELEASE TO MARKETING	TH		



- [8]** INDICATED DIMENSIONS ARE TO CENTER OF GRAVITY (CG)
- WEIGHT: 27.2 KG [60 LBS].
  - SUSPENSION POINTS: M10 THREADED SUSPENSION POINTS. 4X TOP, 4X BOTTOM, 2X LEFT, 2X RIGHT, 3X REAR
  - COMPONENTS: LF – 2265HPL HF – 2432H
  - INPUT CONNECTORS: NEUTRIK NL4 IN PARALLEL WITH 4 POSITION TERMINAL STRIP.
  - GRILL: 14 GA. PERFORATED CRS, POWDER COATED BLACK WITH BLACK FOAM BACKING.
  - MATERIALS: 5/8 INCH BIRCH PLYWOOD.
  - FINISH: BLACK DURAFLEX (WHITE AVAILABLE BY CUSTOM ORDER)



NOTES: (UNLESS OTHERWISE SPECIFIED)

TOLERANCES (UNLESS OTHERWISE SPECIFIED)					
X.XX	±	.063	INCH		
X.X	±	.125	INCH		
ANGULAR TOLERANCE OF 0±30°					
FRACTIONAL DIMENSIONS ± 1/32					
• DIMENSIONS ARE INCHES					
• ALL DIMENSIONS ARE FINISHED DIMENSIONS					
• DO NOT SCALE DRAWING					

TITLE		JBL PROFESSIONAL	
A Harman International Company		Northridge, California 91329 U.S.A.	

CUSTOMER DRAWING: AM7215/XX

SIZE	DRAWING NO.	REV
A	443938	A

SCALE	NTS	SHEET	1	OF	1
-------	-----	-------	---	----	---